



pearson  
ferrier®



36 DERBY COURT  
Bury, BL9 6WG  
£112,500

# 36 DERBY COURT

## Property at a glance

- FIRST FLOOR APARTMENT
- WELL PRESENTED THROUGHOUT
- ONE BEDROOM (WITH FITTED FURNITURE)
- KITCHEN WITH RANGE OF APPLIANCES
- BATHROOM WITH BATH AND SHOWER OVER
- ELECTRIC HEATING
- COMMUNAL GARDENS
- DESIGNATED PARKING
- EASY ACCESS TO BURY CENTRE

A first floor one bedroom apartment within Derby Court, just off Walmersley Road in Bury within half a mile of Bury town centre and just literally round the corner from Clarence Park. The property is being offered for sale with no onward chain and whilst more or less original is presented in first class order throughout. The property overlooks the garden areas to the front and is across the road from a handy convenience store. With electric Dimplex heaters and upvc double glazing and remotely operated door entry, the accommodation briefly comprises: communal entrance hall, stairs to landing, inner hall, lounge with living flame electric fire, kitchen with a range of built in appliances, bedroom with fitted furniture and three piece bathroom with shower over the bath. To the outside there are communal gardens and designated parking.

Council Tax Band - A

EPC - C

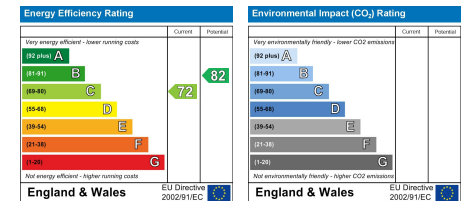
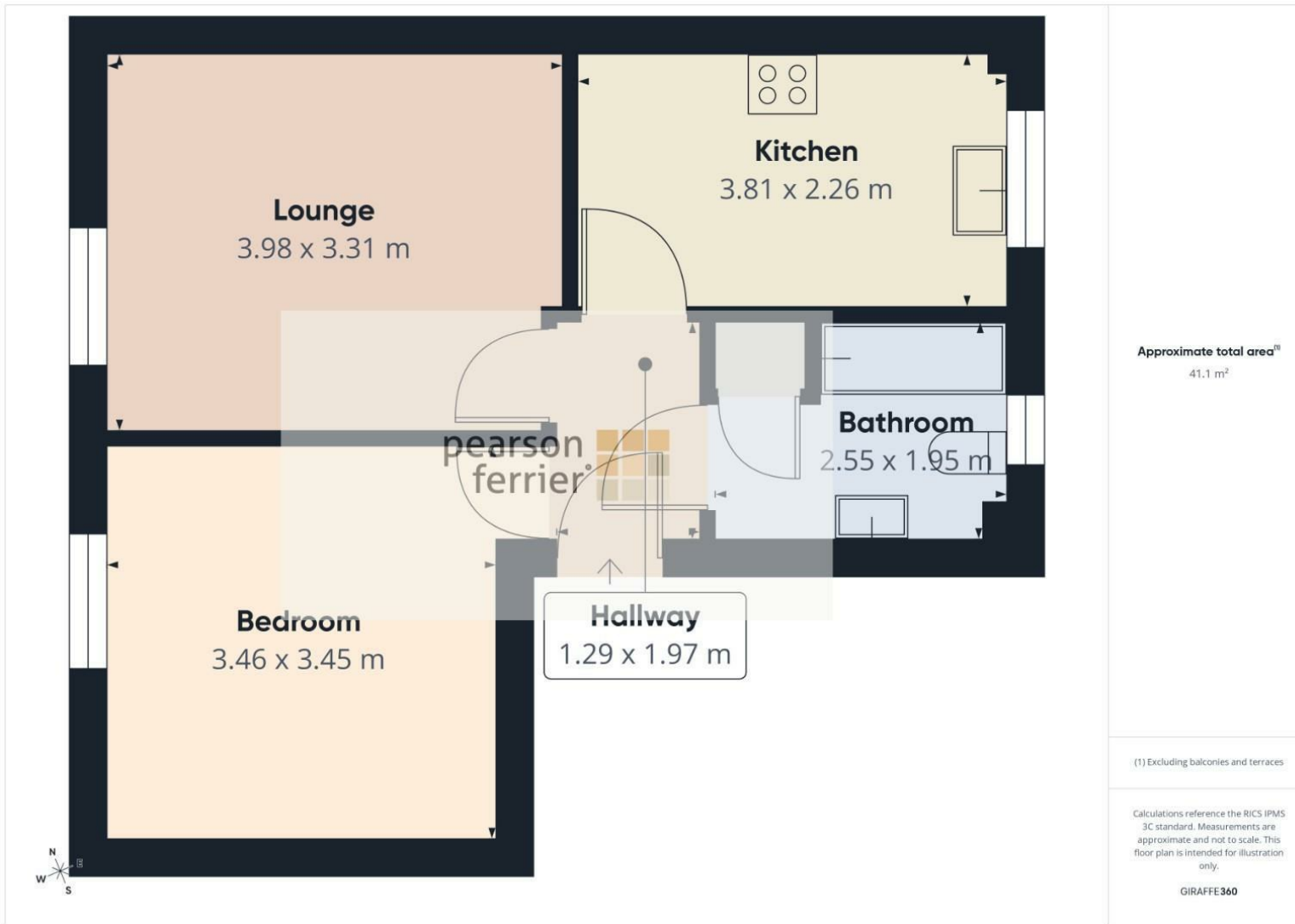
Tenure - Leasehold 155 years from 2006

Ground Rent £120 per year

Management charge £137.93 per month (paid quarterly)







Bury Office  
 435/7 Walmersley Road, Bury, Lancashire, BL9 5EU  
 Telephone: 0161 764 4440  
 Fax: #  
 Email: bury@pearsonferrier.co.uk

www.pearsonferrier.co.uk



All statements contained in these particulars are for indicative purposes only and are made without responsibility on the part of Pearson Ferrier and the vendors of this property and are not to be relied on as statements or representations of fact. Potential purchasers should satisfy themselves by inspection or otherwise as to the accuracy of such details contained in these particulars.